

# Reactis V2019.2

Released December 20, 2019



# Read from Test in User-Guided Simulation

In User-Guided simulation, some inputs can be taken from existing test:

The screenshot shows a window titled "Next Input Values" with a close button (X) in the top right corner. Below the title bar is a toolbar with a search box, a "Random" dropdown, and several navigation icons (back, forward, list, play, pause). To the right of the icons is a numeric input field containing "50" and a settings gear icon. Further right is a dropdown menu currently set to "default".

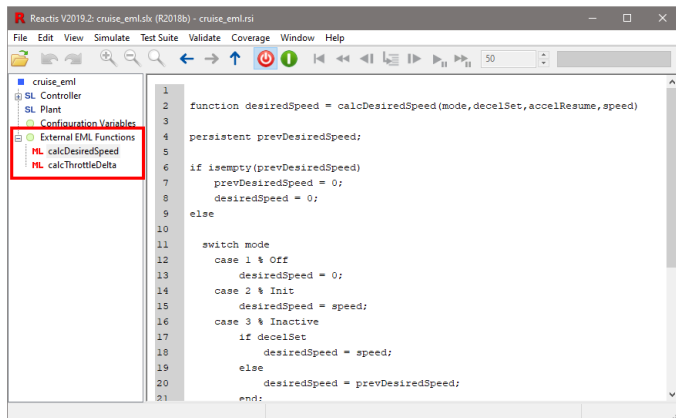
Below the toolbar is a section labeled "Inputs" containing a list of input parameters. Each row has a checkbox, a dropdown menu, a text input field, and a "H" button with up/down arrows. The "Test" dropdown is selected for the "brake" and "cancel" rows.

Input	Source	Value
accelResume	Entry	0.0
brake	Test	Test 2 from suite cruise.rst
cancel	Test	Test 2 from suite cruise.rst
decelSet	Entry	0.0
drag	Random	-0.01
gas	Entry	0.0
inactiveThrottleDelta	Random	-0.1
onOff	Entry	0.0

# Reactis for EML Plugin: External Functions

For functions in external .m files:

- ▶ Tester attempts to cover targets
- ▶ In Simulator, can step into external function



The screenshot shows the Reactis V2019.2 IDE interface. The left sidebar displays a project tree for 'cruise\_eml', with 'External EML Functions' expanded to show 'ML calcDesiredSpeed' and 'ML calcThrottleDelta'. The main editor window displays the following EML code:

```
1
2 function desiredSpeed = calcDesiredSpeed(mode, decelSet, accelResume, speed)
3
4 persistent prevDesiredSpeed;
5
6 if isempty(prevDesiredSpeed)
7     prevDesiredSpeed = 0;
8     desiredSpeed = 0;
9 else
10
11     switch mode
12         case 1 % Off
13             desiredSpeed = 0;
14         case 2 % Init
15             desiredSpeed = speed;
16         case 3 % Inactive
17             if decelSet
18                 desiredSpeed = speed;
19             else
20                 desiredSpeed = prevDesiredSpeed;
21     end;
```

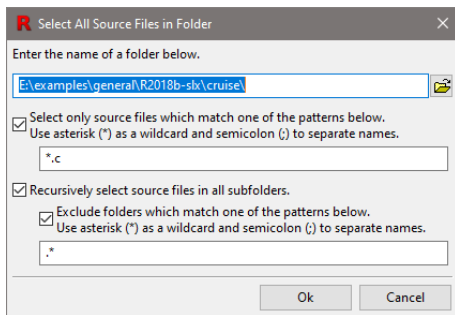
# Reactis for EML Plugin

Newly supported functions:

- ▶ repmat
- ▶ polyval
- ▶ eps
- ▶ rcond

# Reactis for C Plugin

When adding source files to a library it is now possible to add files recursively from all subfolders.



# New Simulink Support

- ▶ R2019b.
- ▶ Event Listener blocks listening to Initialize and Terminate events.

# Other improvements

- ▶ When adding Simulink.Parameter workspace variables as configuration variables, Reactis automatically retrieves ranges set in the Simulink.Parameter object and applies them to the configuration variable.
- ▶ Reactis can analyze a model to retrieve information about the model's size. Either select *View* → *Get Model Statistics* in the GUI or use the rsModelStatistics API function within MATLAB.

- ▶ Added rsRsiGetDependencies and rsRsiSetDependencies functions to set and query the model's additional dependencies (*Edit* → *Dependencies in the GUI*).
- ▶ Added rsModelStatistics function which returns a list of statistics describing the size of the model.