

Reactis V2011

Released June 23, 2011



New Simulink Support

- ▶ MATLAB R2011a
- ▶ Function-Call Split block
- ▶ Rate Limiter block
- ▶ Enumerated types in S-Functions and Legacy Code blocks

New Tester Launch Dialog

How long to run? →

- ▶ time
- ▶ steps
- ▶ random/targeted steps

Reactis Tester: cruise.slx

Preload Files: Prune Use Virtual Sources

Run for: hours minutes
 30000 steps
 5 tests in random phase
 steps per random test prune tests
 steps in targeted phase

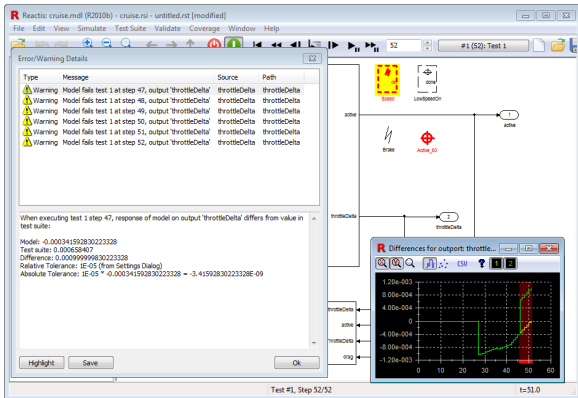
Coverage Objectives:

<input checked="" type="checkbox"/> Conditional Subsystems	<input checked="" type="checkbox"/> Decisions
<input checked="" type="checkbox"/> Branches	<input checked="" type="checkbox"/> Conditions
<input checked="" type="checkbox"/> Lookup Targets	<input checked="" type="checkbox"/> MC/DC
<input checked="" type="checkbox"/> States	<input checked="" type="checkbox"/> MCC
<input checked="" type="checkbox"/> Condition Actions	<input checked="" type="checkbox"/> Boundaries
<input checked="" type="checkbox"/> Transition Actions	<input checked="" type="checkbox"/> User-Defined Targets
<input checked="" type="checkbox"/> CSEPT	<input checked="" type="checkbox"/> Assertion Violations

Additional Parameters:

Output File:

Separate Tolerance for Each Output



When running tests, Reactis flags output differences between model and test suite.

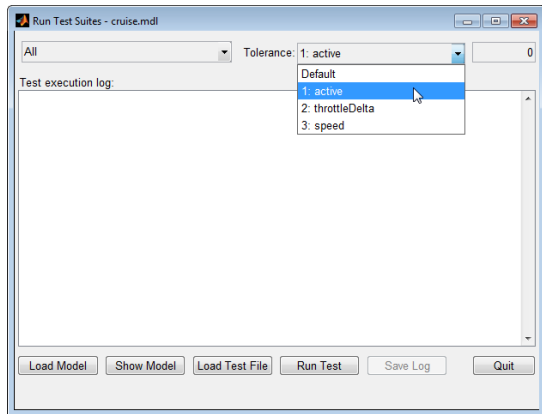
Tolerance

Old: global

New: different

tolerance possible for each output

Separate Tolerance for Each Output



Tolerances flow through to runtests

Model Search

The screenshot displays the Reactis software interface for a file named "cruise.mdl (R2010b) - cruise.rsi". The interface includes a menu bar (File, Edit, View, Simulate, Test Suite, Validate, Coverage, Window, Help) and a toolbar with various navigation and simulation controls. On the left, a project tree shows the hierarchy: "cruise" > "SL CruiseMain" > "SL CruiseMDL" > "DeactivateActivate", "DesiredSpeed", "Mode", "SpdCheck", "ThrottleCtl", "Plant", "LowSpeedOn", "Speed", and "Configuration Variables".

The main workspace shows a logic diagram with several inputs and gates. Inputs include "cancel" (3), "brake" (5, highlighted in yellow), "gas" (6), "From" ([A]), "accelResume" (2), and "decelSet" (4). The logic consists of an OR gate labeled "deactivate" receiving inputs from "cancel", "brake", and "gas". This OR gate's output goes to a NOT gate labeled "notd". The output of "notd" goes to an AND gate labeled "activate1", which also receives input from "accelResume". The output of "activate1" goes to an XOR gate labeled "activate", which also receives input from "decelSet". The output of "activate" goes to an AND gate labeled "activate1" (reusing the label), which also receives input from "From". The output of this AND gate goes to an OR gate labeled "activate", which also receives input from "onOff" (1). The output of "activate" goes to a "set" block, which also receives input from "Mode". The "set" block's output goes to an "onOff" block, which also receives input from "onOff" (1). The "onOff" block's output goes to an "activate" block, which also receives input from "mode".

A "Search in CruiseMDL" dialog box is open in the foreground. It has a search field containing "brake" and a "Find Next" button. Below the search field are two checkboxes: "Match whole word only" (unchecked) and "Match case" (unchecked). To the right of these checkboxes is a "Direction" section with two radio buttons: "Up" (unchecked) and "Down" (checked). A "Cancel" button is located at the bottom right of the dialog box.

Copy System Path

The image shows a software interface for Reacis, displaying a system diagram and a Notepad++ window. The Reacis window, titled "Reacis: cruise.mdl (R2010b) - cruise.rsi", features a menu bar with "File", "Edit", "View", "Simulate", "Test Suite", "Validate", "Coverage", "Window", and "Help". A toolbar contains various icons for navigation and simulation. The main area shows a system diagram with components like "cancel", "OR", "deactivate", "NOT", "activate", and "mode". A context menu is open over the "From" component, listing options such as "Toggle Breakpoint", "Add Watched Variables...", "Open Scopes...", "Open Distribution Scopes...", and "Copy System Path". The Notepad++ window, titled "*new 2 - Notepad++", has a menu bar with "File", "Edit", "Search", "View", "Encoding", "Language", "Settings", "Macro", "Run", "Plugins", "Window", "?", and "X". The text "cruise/CruiseMain/CruiseMDI" is selected in the editor, and a context menu is open over it, listing options like "Cut", "Copy", "Paste", "Delete", "Select All", and "Style token".

Other Items

- ▶ Extract subsystem option to not extract trigger mechanism when extracting
- ▶ Improved model initialization performance subsystem