

# Reactis V2014

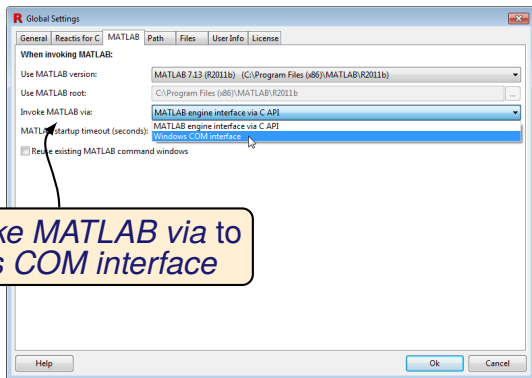
Released June 25, 2014



# New Simulink Support

- ▶ R2014a.
- ▶ Stateflow box states within graphical functions.
- ▶ Bus To Vector blocks.
- ▶ Mask parameter block promotion.

# Switch MATLAB Versions Without Administrator Privileges



Set *Invoke MATLAB* via to  
*Windows COM interface*

## Version

R2006b or earlier

R2007b through R2011b

2012a and later

## Compatible?

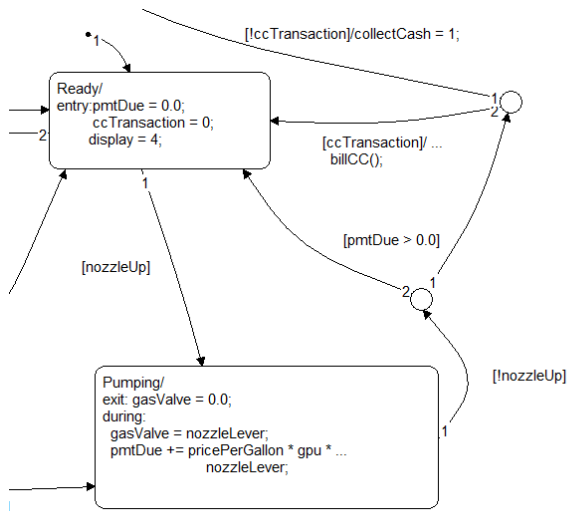
No

Partially

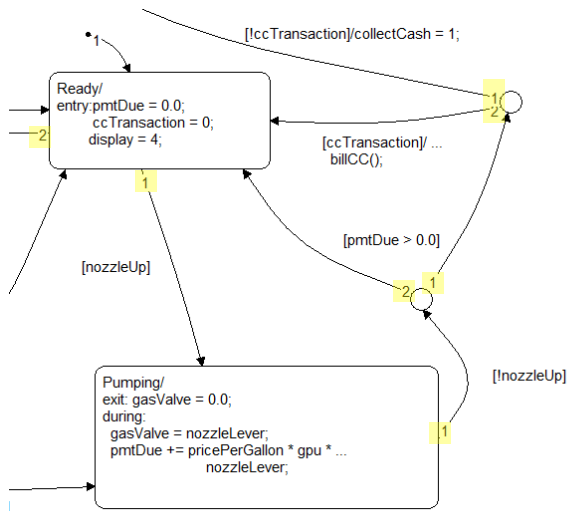
Fully

- ▶ When extracting a subsystem whose inports or outports are virtual buses, Reactis now automatically creates a Simulink.Bus object to define the bus structure of the port in the exported subsystem.
- ▶ Avoids errors about missing signals when simulating the extracted subsystem.

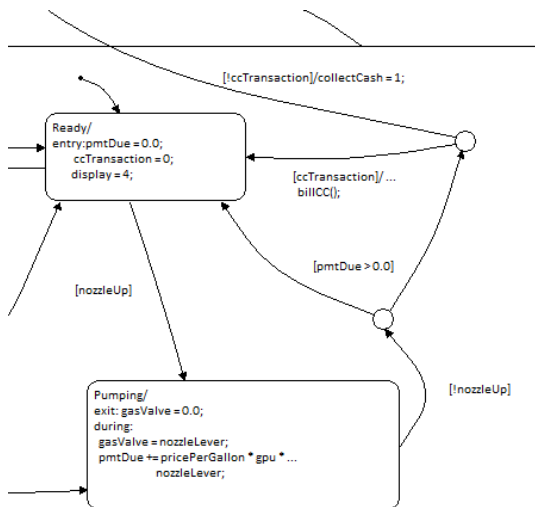
# Display Stateflow User-Defined Transition Ordering



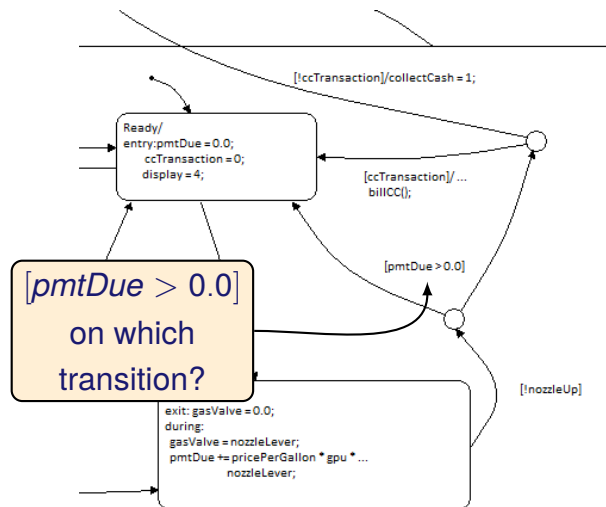
# Display Stateflow User-Defined Transition Ordering



# Highlight Stateflow Transition Label with Segment

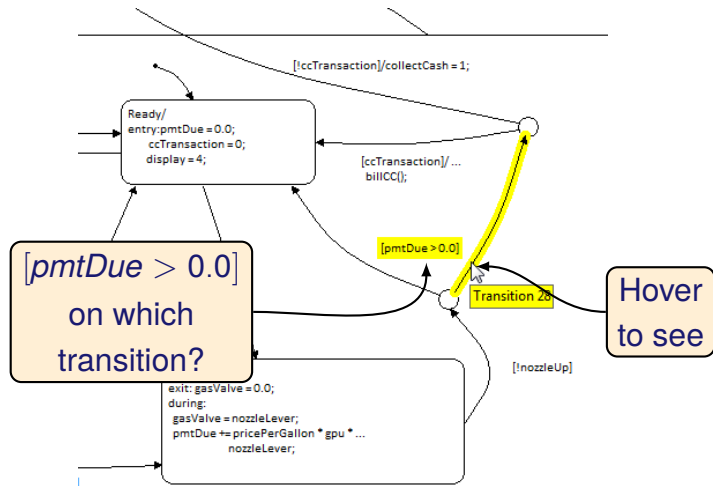


# Highlight Stateflow Transition Label with Segment





# Highlight Stateflow Transition Label with Segment



# Other Enhancements

- ▶ New API functions to add Validator objectives
- ▶ When exporting to .csv format it is now possible to specify the number of significant digits for the exported data.

# Reactis for C Plugin Enhancements

- ▶ Inf or NaN values can be flagged as warnings or errors
- ▶ Create decision target for all boolean expressions in program.
  - ▶ Previously only boolean expressions determining execution path were targets, e.g. those in if, while, for statements.
  - ▶ New mode, also tags  $y||z$  as decision in:
    - ▶  $y||z?e_2 : e_3;$
    - ▶  $z = y||z;$
- ▶ Decision tagging is configurable setting